

# JKTech Specialist Software



## 2-D Mineral Processing Mass Balancing using JKMultiBal

### What is JKMultiBal?

JKMultiBal is a powerful tool for the mass-balancing of comminution and flotation circuits and other areas of mineral processing plants.

JKMultiBal builds upon the strengths of existing packages such as JKMBal, JKSimMet and JKSimFloat to produce a state of the art two dimensional (size-by-assay) mass-balancing software solution.

The mass-balancing program used by JKMultiBal is a robust program developed at the JKMRRC and rigorously tested by JKTech Consulting staff using operating plant data.

JKMultiBal is intended for users at all levels of experience. It has been designed for users who are inexperienced in both computing and the use of mineral processing plant analysis software tools.

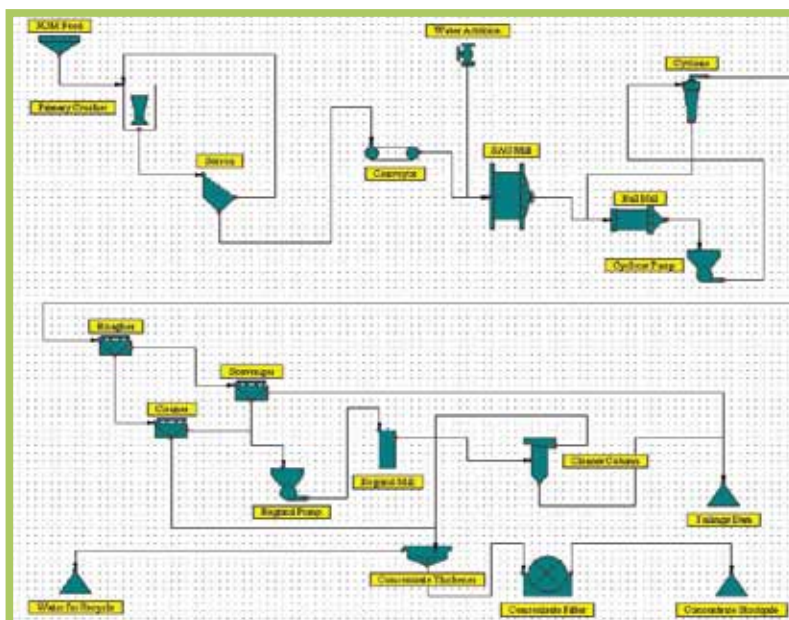
For more experienced users it offers advanced information by enabling customised analysis in order to maximise the benefits that can be delivered from the results.

The major application for many users would be to carry out process analysis and optimisation of existing



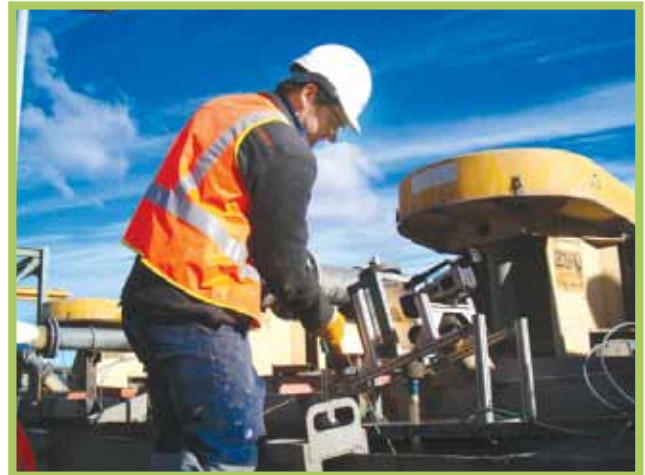
circuits, using the powerful 2-D capability to perform analyses on a size-by-assay basis.

It is also extremely useful for providing circuit performance options and investigating modifications to the circuit.



## JKMultiBal Allows the User to:

- Build a graphic-based flowsheet of the processing plant
- Mass balance plant data to obtain a consistent data set
- Calculate missing data for streams within the circuit



## Software Modules

- User interface and data structure
- Flowsheet builder
- Size by assay mass balancer
- Mass balance manager
- Reporting functionality

## Icons Available

- Crushing
- Grinding
- Classification
- Gravity separation
- Flotation
- Heavy media separation
- Thickening and filtration
- Splitters
- Combiners

## Operating Requirements

Intel Pentium or compatible PC, 400 MHz with:

- 128Mb minimum - recommend 512Mb
- CD-ROM drive
- Hard drive with 100 Mb free space
- SVGA video card

## JKTech Services

- Consulting (comminution, flotation, mineralogy, mining & geometallurgy)
- Process Mineralogy and In-House Instrument Analysis
- Specialist Software (JKSimMet, JKSimFloat, JKMultiBal, JKSimBlast)
- Specialist Equipment (ore breakage characterisation, flotation characterisation)
- Metallurgical Laboratory Services
- SMI Knowledge Transfer

## Contact

Dr Rolf Fandrich  
Products Manager

Telephone: +61 7 3365 5922

Facsimile: +61 7 3365 5900

Email: [r.fandrich@jktech.com.au](mailto:r.fandrich@jktech.com.au)

*JKTech's range of technologies is supported by the ongoing research activities of the Sustainable Minerals Institute at The University of Queensland.*

