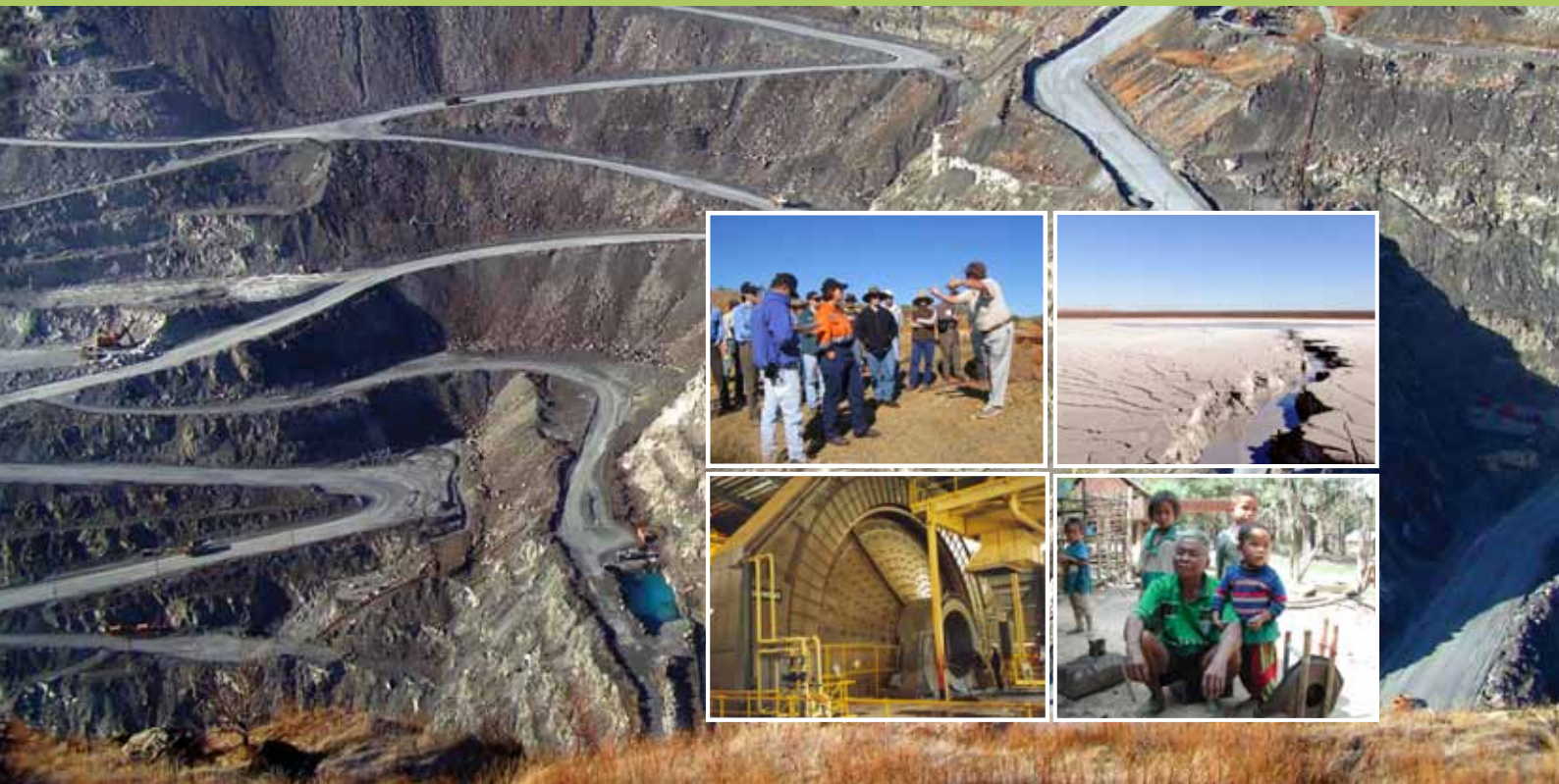




SMI

Knowledge Transfer

Delivering innovation to the global resources industry through quality professional development and training.



JKTech Pty Ltd
www.jktech.com.au

SMI Knowledge Transfer, a business unit of JKTech, is a unique professional development provider, offering continuing professional development and training programs designed to support the global resources industry.

SMI Knowledge Transfer (SMI KT) has access to leading research and industry expertise from the six centres of the Sustainable Minerals Institute (SMI) at the University of Queensland and nationally and internationally recognised industry and government professionals. SMI KT draws on JKTech specialists, as well as leading academics, researchers and consultants from its partner institutions within Australia and around the world.

WHAT CAN SMI KT OFFER?

SMI KT offers a range of professional development activities, training courses and workshops in a variety of locations that include mine-sites, urban and regional centres in Australia and around the world. Delivery can range from half-day short courses to intensive week-long workshops. A schedule of set courses and workshops is developed for each calendar year and is available from the JKTech website www.jktech.com.au.

Individual workshops and courses can be tailored to the clients' needs, and delivered on-site or at a venue convenient to their location.

WHO SHOULD ATTEND SMI KT TRAINING?

SMI KT courses are designed to cater for the diverse needs of those working in the resources industry. Some courses are designed for company executives with finance or management background and minimal prior knowledge of the unique aspects of the resources industry. Others are designed for long-term industry professionals who require advanced training in a particular technical area. Still others will suit those interested in recent technical innovations, changes to government regulations, or new methodologies.

Courses will benefit:

- Mine and Project Managers
- Metallurgists and Process Engineers
- Mine Planners, Mining Engineers and Energy Efficiency Engineers
- Geologists and Geotechnical Engineers,
- Environmental Officers/Advisors/Managers
- HSE and Sustainability Managers
- Community Relations Practitioners
- Site-based Plant Operators/Technicians

Please take the time to look at our current Professional Development and Training Calendar for details of specific courses, dates and further information.



MINING AND GEOLOGY

SMI KT has access to a range of specialists in mining and geology within JKTech and The WH Bryan Mining and Geology Research Centre (BRC).

Training and Professional Development on offer includes:

- Drill and Blast Engineering
- Geometallurgy for Mining
- Mine to Mill Process Optimisation
- Eco-efficiency Reporting
- Mass Mining

ORE CHARACTERISATION AND PROCESS IMPROVEMENT

Training courses offered by JKTech and the Julius Kruttschnitt Mineral Research Centre (JKMRC) draw on the internationally recognised mineral processing expertise of the JK Centre in ore characterisation, circuit optimisation and process improvement.

Training and Professional Development on offer includes:

- Comparative Statistics and Experimental Design
- Practical Process Plant Sampling
- Foundations in Geometallurgy
- Eco-efficient Comminution
- Process Mineralogy
- Flotation Chemistry
- Simulation and Optimisation using JKSimMet or JKSimFloat
- Mineral Processing for Non-Metallurgists

INTEGRATED PROGRAMS

SMI KT is uniquely positioned to offer courses that integrate technical developments in mining and mineral processing with impacts in key areas such as energy and water efficiency, and social and community outcomes.

Training and Professional Development on offer includes:

- Sustainable Development in the Minerals Industry
- Mine to Mill Process Optimisation
- OneMine
- Sustainable Operations (SUSOP)
- Mining Project Options Review



SOCIAL AND COMMUNITY ISSUES

SMI KT in association with the Centre for Social Responsibility in Mining (CSRSM) conducts training and professional development on how to manage the socio-economic and political challenges that companies, communities and governments need to consider when change is brought about by resource extraction.

Training and Professional Development on offer includes:

- Community Relations and Community Development
- Cumulative and Social Impact Assessment
- Socio-Economic Aspects of Mine Closure
- Conflict Management
- Designing and Evaluating Corporate-Community Initiatives

REHABILITATION, WATER AND ENVIRONMENTAL MANAGEMENT

Research into rehabilitation and management of environmental issues is conducted by the Centre for Mined Land Rehabilitation (CMLR). With water management issues becoming increasingly important for the minerals industry and society in general, the Centre for Water in the Minerals Industry (CWIMi) has developed a reputation for work on strategic water management, water accounting, cumulative impacts and assessment of mine-water discharge. It is also involved in coal-seam gas research.

Outcomes of research by specialists in these two Centres are passed on to industry and government personnel in training courses and workshops on a range of topics listed below. In addition, SMI Knowledge Transfer is also able to contribute courses previously offered by ACMER.

Training and Professional Development on offer includes:

- Life-of-Mine Planning
- Mine Closure Planning
- Environmental Management and Monitoring
- Management of Acid and Metalliferous Drainage
- Water and Water Quality Management and Water Accounting
- Environmental Hazards and Risks
- Practical Environmental Monitoring

RISK MANAGEMENT

SMI KT, in conjunction with the Minerals Industry Safety and Health Centre (MISHC) and industry specialists, now offers professional development courses in Risk Management and Incident Investigation to industry professionals

in Australasia.

Training and Professional Development on offer includes:

- Global Minerals Industry Risk Management (GMIRM)
- Incident Investigation and Analysis

BENEFITS OF WORKING WITH JKTECH

1. Access to cutting edge research and technology from the Centres of the Sustainable Minerals Institute (SMI).
2. A dedicated team of world class specialists, experts in their field, working to maximise the potential of each stage in your project lifecycle.
3. Innovative and proven techniques developed by leading industry experts.
4. Measurable increases in productivity and metal recovery, resulting in a more sustainable and profitable operation.
5. A global network of agents delivering JKTech products and services.

About The Company

JKTech Pty Ltd is the technology transfer company for the Sustainable Minerals Institute (SMI) at The University of Queensland. Its role is to take viable research outcomes and transfer them to the international minerals industry.

JKTech offers a range of innovative solutions for the minerals industry aimed at optimising sustainability, increasing productivity and metal recovery and reducing operating costs. These specialist products and services include consulting, software, equipment, laboratory services and knowledge transfer.



FURTHER INFORMATION ON PROFESSIONAL DEVELOPMENT AND TRAINING SERVICES

The Knowledge Transfer team has access to highly skilled experts with world-wide experience in various fields.

For more detailed information on JKTech's entire range of training and professional development services and to view the Training and Events Calendar, please visit the JKTech website, www.jktech.com.au, or contact:

Ron McLean

Email: r.mclean@jktech.com.au

Telephone: +61 7 3365 5956



JKTech Services

JKTech's extended range of technologies and products, all supported by the ongoing research activities of the Sustainable Minerals Institute at The University of Queensland, include:

- Consulting (comminution, flotation, mineralogy, mining and geometallurgy, Mine to Mill®)
- Process mineralogy and in-house mineralogical analysis
- Specialist Software (JKSimMet, JKSimFloat, JKMultiBal, JKSimBlast)
- Specialist Equipment (JKRBT, JK Drop Weight Tester, flotation characterisation equipment)
- Metallurgical Laboratory Services
- Knowledge Transfer (professional development, training courses, workshops)